

A PROJECT IN DUBAI ISLANDS

WHITECLIFFS

RESIDENCES

WHITECLIFFS RESIDENCES

```
graph TD; A[WHITECLIFFS RESIDENCES] --> B[6 Year Payment Plan]; A --> C[1% Monthly]; A --> D[Lavish Lifestyle]; A --> E[Irresistible Residential Area];
```

6 Year
Payment Plan

1% Monthly

Lavish
Lifestyle

Irresistible
Residential
Area



ABOUT US

AG Properties LLC & AGP Builders Real Estate Development LLC are one of the top-tier luxury real estate developers in the Middle East. We are the most trusted real estate development group of companies for over 2 decades. AG Properties LLC & AGP Builders Real Estate Development LLC are committed to creating residential & commercial developments across the emirates that provide distinctive and enriching lifestyles for residents.

AG Properties LLC & AGP Builders Real Estate Development LLC also offer institutional & retail investors access to an extensive property portfolio for development and investment opportunities. All the initiatives aim to enrich the lives of residents and visitors, bringing a vast collection of living experiences to the emirates.

Meet your life goals with a secure investment at AG Properties LLC & AGP Builders Real Estate Development LLC .



AG TOWER

OFFICE NUMBER 07, GROUND
FLOOR, BUSINESS BAY, DUBAI, UAE



04 5634999



info@agproperty.ae



www.agproperty.ae

Introducing **WHITECLIFFS RESIDENCES**

by
AG PROPERTIES LLC & AGP BUILDERS REAL
ESTATE DEVELOPMENT LLC

WHITECLIFFS RESIDENCES, a new project innovation by AG Properties LLC & AGP Builders Real Estate Development LLC provides the community of Dubai with Smart Homes. The project is located within a bustling city, providing a tribute to the essence of Smart Home.





Introducing
WHITECLIFFS RESIDENCES
by
AG PROPERTIES LLC & AGP BUILDERS REAL
ESTATE DEVELOPMENT LLC

WHITECLIFFS RESIDENCES is smoothly blending contemporary charm with lavishness paying extra attention to the comfort. The apartments are thoroughly designed to not only provide comfort but also take care of elegance and sophistication. The layouts are remarkable and enhance the features with creativity. The building stands firm in the center of Dubai near the Gold Souk and provides a high-end lifestyle of private residences with G + 2P + 12 floors of stunning accommodation.



WHITECLIFFS RESIDENCES

An aerial architectural rendering of a coastal residential development. The image shows a large, curved artificial island or peninsula with a mix of modern high-rise buildings and lower-density housing. The area is surrounded by turquoise water with sandy beaches and small coves. A prominent curved road runs along the coastline. To the right, a bridge connects the development to a densely built-up urban area. The sky is clear, and the overall scene is presented in a bright, idealized style.

IRRESISTABLE RESIDENTIAL AREA

WHITECLIFFS RESIDENCES

LOCATED IN DUBAI ISLANDS

An artificial archipelago located off the coast of Deira, Dubai Islands is an ongoing project set to span 17 square kilometers across five islands. This mixed-use development is gaining recognition for its upscale residences, hotels, lifestyle projects, and marinas, and significantly expands Dubai's coastline with over 20 kilometers of new beachfront, including a Blue Flag-certified eco-friendly beach.

Dubai Islands, accessible from the mainland by both road and sea, is slated to accommodate more than 80 hotels ranging from luxurious wellness centers to boutique establishments, family-oriented resorts, and environmentally conscious options. The development will also incorporate 2 square kilometers of parks and open spaces, alongside premium golf courses offering views of the Arabian Gulf. An extensive network of marina promenades, pathways for water and road transport, as well as walking and cycling routes, will facilitate seamless connectivity throughout the area.

WHITECLIFFS RESIDENCES





AG Properties LLC & AGP Builders Real Estate Development LLC OFFERS

LOCATED IN THE CENTER OF DUBAI



5 Minutes to Gold Souk



10 Minutes to Dubai Frame

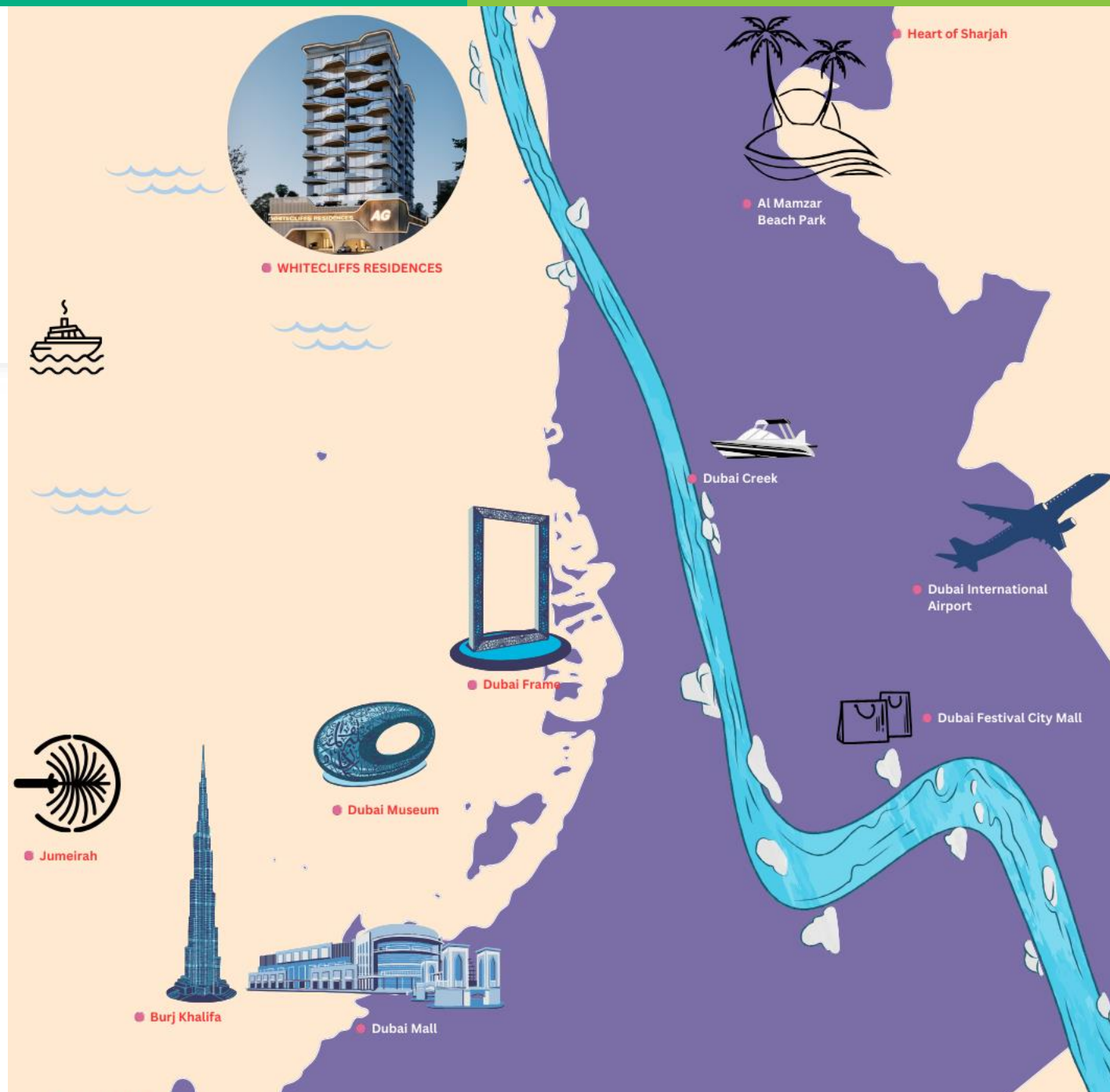


12 Minutes to Dubai International Airport

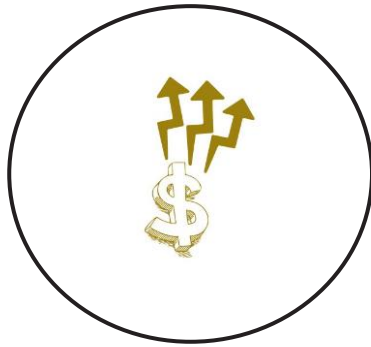


15 Minutes to Burj Khalifa

WHITECLIFFS RESIDENCES



WHY INVEST WITH US



Optimize Capital
Appreciation



Security & Safety



Great Return on
Investment



Good Rental Income to
High Yield



Excellent Level of
Luxury Lifestyle

WHITECLIFFS RESIDENCES

SERENE RECEPTION



WHITECLIFFS RESIDENCES

SITTING
AREA



WHITECLIFFS RESIDENCES

An aerial photograph of a coastal resort. In the foreground, a wide, white sandy beach is dotted with people and rows of red and white beach umbrellas. The turquoise ocean waves gently lap at the shore. Several sailboats are visible in the water. Behind the beach, a dense line of palm trees separates the shore from a residential area. The residences are modern, low-rise buildings with light-colored facades, interspersed with lush greenery and swimming pools. In the background, a golf course with green fairways and sand traps stretches towards the horizon. The sky is a clear, vibrant blue with a few wispy clouds. A flock of birds is seen flying in the upper left corner of the sky.

STUNNING ACCOMODATION AND SERENE VIEW

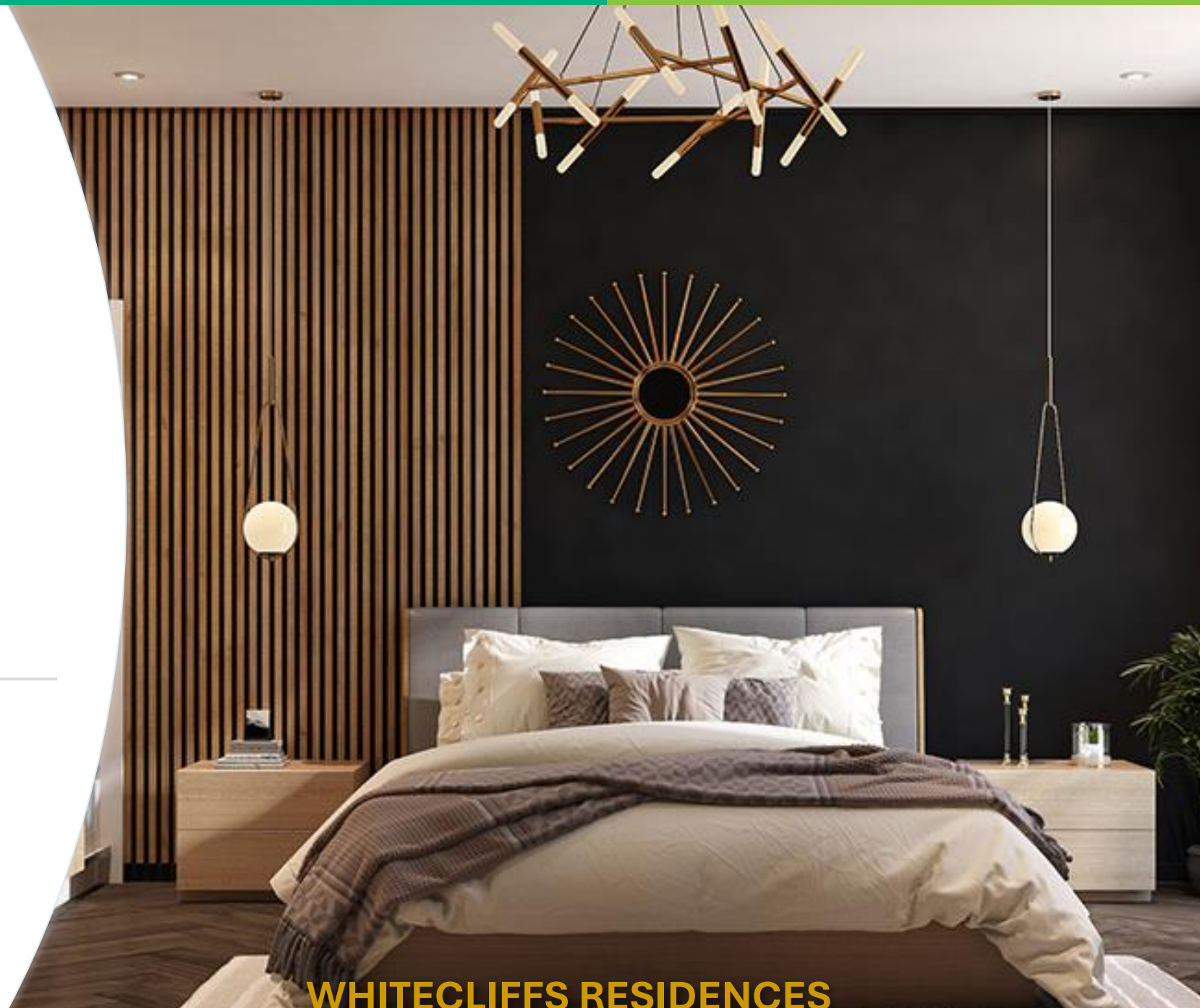
WHITECLIFFS RESIDENCES

LAVISH LIVING ROOM



WHITECLIFFS RESIDENCES

ELEGANT & CHIC BEDROOM



WHITECLIFFS RESIDENCES

ELEGANT & CHIC BEDROOM



WHITECLIFFS RESIDENCES

CONTEMPORARY DESIGNED BATHROOM

WHITECLIFFS RESIDENCES



SPACIOUS CLOSET

WHITECLIFFS RESIDENCES

KITCHEN



WHITECLIFFS RESIDENCES

A modern luxury residence with a large infinity swimming pool overlooking the ocean. The pool is rectangular and filled with clear blue water, reflecting the sky. To the left of the pool is a wooden deck with several white lounge chairs. The building has large glass windows and a white overhang. The ocean is visible in the background under a blue sky with some clouds.

SWIMMING POOL

WHITECLIFFS RESIDENCES

A wide-angle photograph of a modern gym interior. The space is bright and airy, featuring large floor-to-ceiling windows on the right side that offer a view of an urban landscape. The ceiling is composed of dark, horizontal wooden slats with recessed lighting. The floor is a mix of light-colored wood and dark grey rubber mats. On the left, there is a stone wall and a rack of kettlebells. In the center, several treadmills are lined up, and a row of blue and black exercise balls sits on a bench. To the right, there are various pieces of gym equipment, including a red and silver cable machine, a black and silver machine, and a brown exercise bench. In the foreground, a few small dumbbells are scattered on the floor.

MODERN STATE OF THE ART GYM

WHITECLIFFS RESIDENCES

BARBEQUE AREA



WHITECLIFFS RESIDENCES

SENSATIONAL SAUNA

WHITECLIFFS RESIDENCES

A photograph of a steam room interior. The room is filled with thick white steam rising from the floor. On the left, there is a brass-colored shower head mounted on a wall of large, light-colored rectangular tiles. In the center, a doorway with a mosaic border leads to a brightly lit area with a yellow wall and a white towel on a rack. To the right, a shower area features a wall of small, multi-colored mosaic tiles and a black shower fixture. A small, glowing light fixture is mounted on the mosaic wall above the shower. The floor is made of light-colored tiles.

STEAM ROOM

WHITECLIFFS RESIDENCES

JACUZZI



WHITECLIFFS RESIDENCES

POOL LOUNGE

WHITECLIFFS RESIDENCES



PADEL COURT

WHITECLIFFS RESIDENCES



GOLF CLUB

WHITECLIFFS RESIDENCES

YATCH STATION

WHITECLIFFS RESIDENCES

A high-end home cinema room featuring a large, dark-colored sectional sofa facing a large projection screen. The room has dark wood-paneled walls with vertical light strips and recessed ceiling lights. A tall, multi-driver speaker stands to the left of the screen. The overall atmosphere is sophisticated and cinematic.

CINEMATIC EXPERIENCE

WHITECLIFFS RESIDENCES

COLD PLUNGE



WHITECLIFFS RESIDENCES

MEETING ROOM



WHITECLIFFS RESIDENCES

PRAYER HALL



WHITECLIFFS RESIDENCES



24/7
SUPPORT

24/7 SUPPORT & SECURITY

WHITECLIFFS RESIDENCES

CABANA



WHITECLIFFS RESIDENCES

FOUNTAIN



WHITECLIFFS RESIDENCES



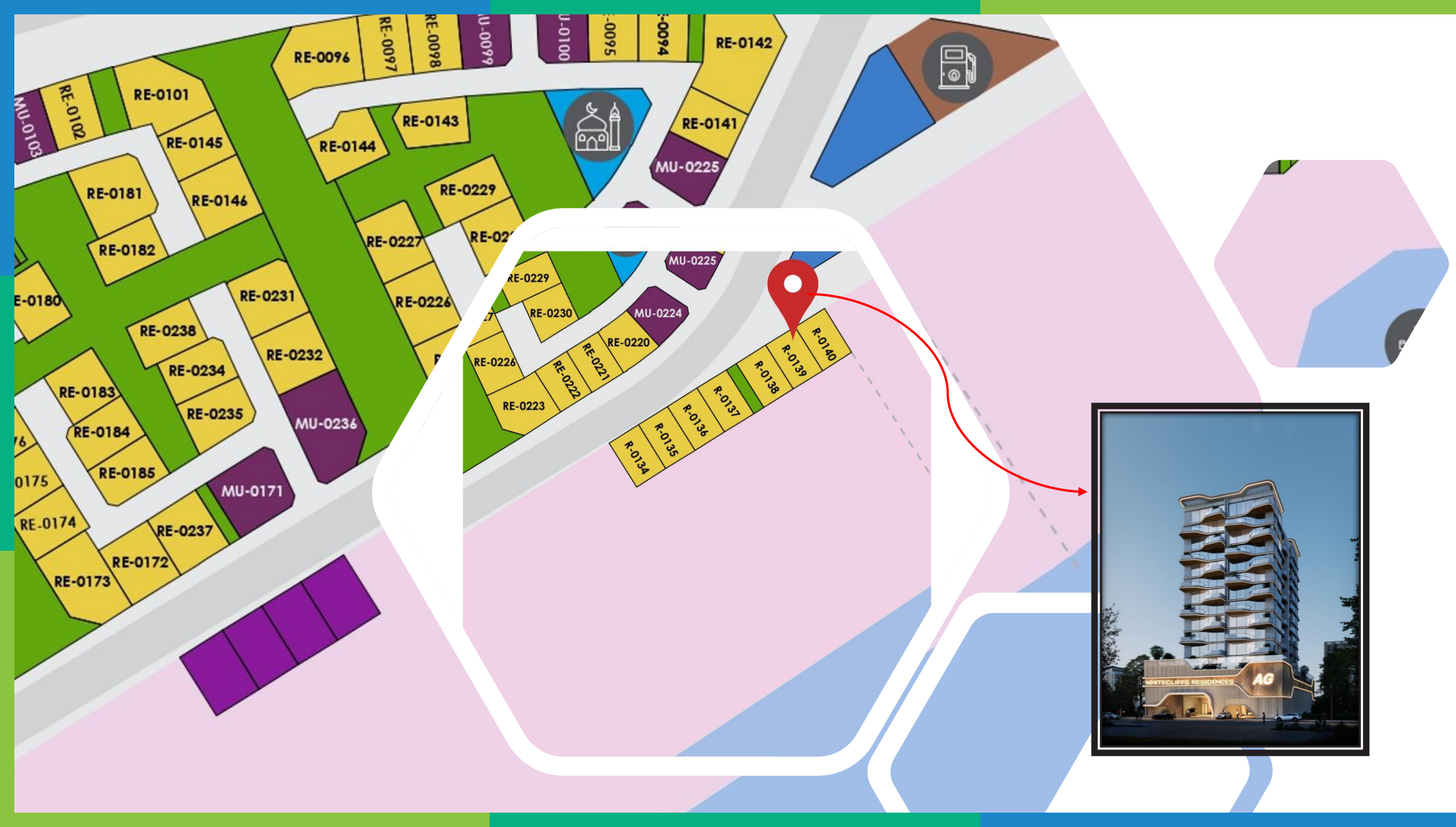
SMART HOME



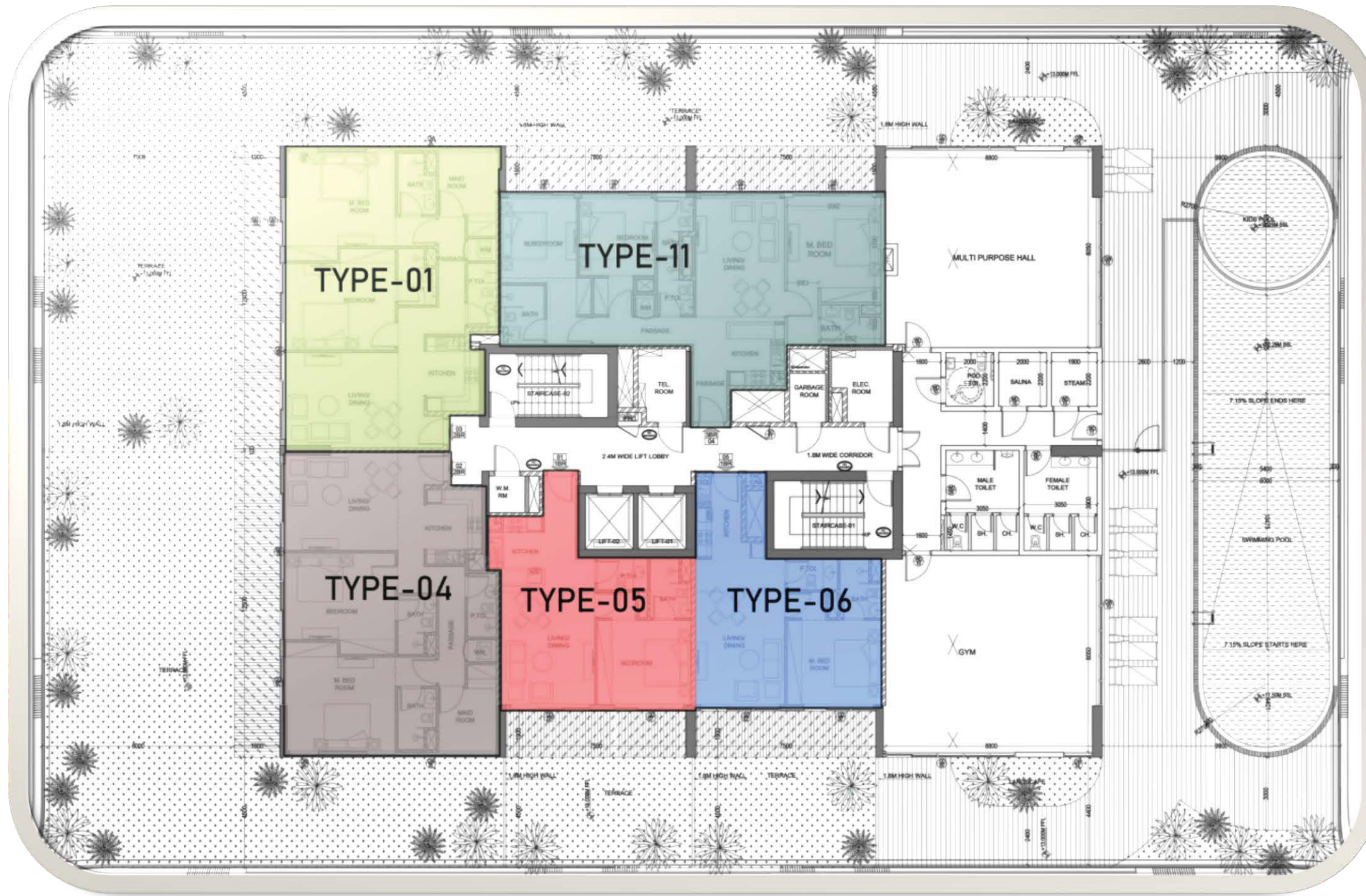
WHITECLIFFS RESIDENCES

MAPS

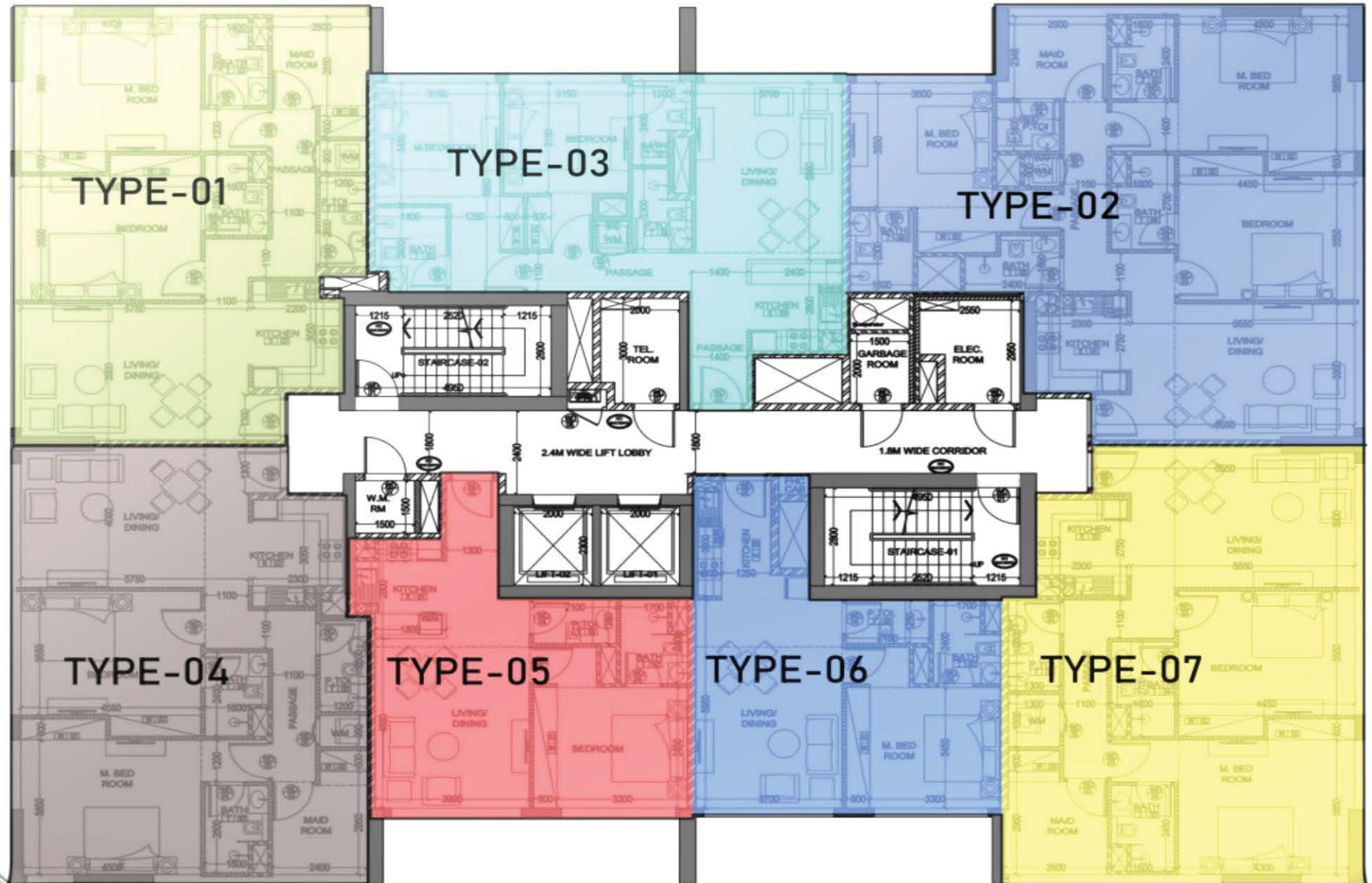




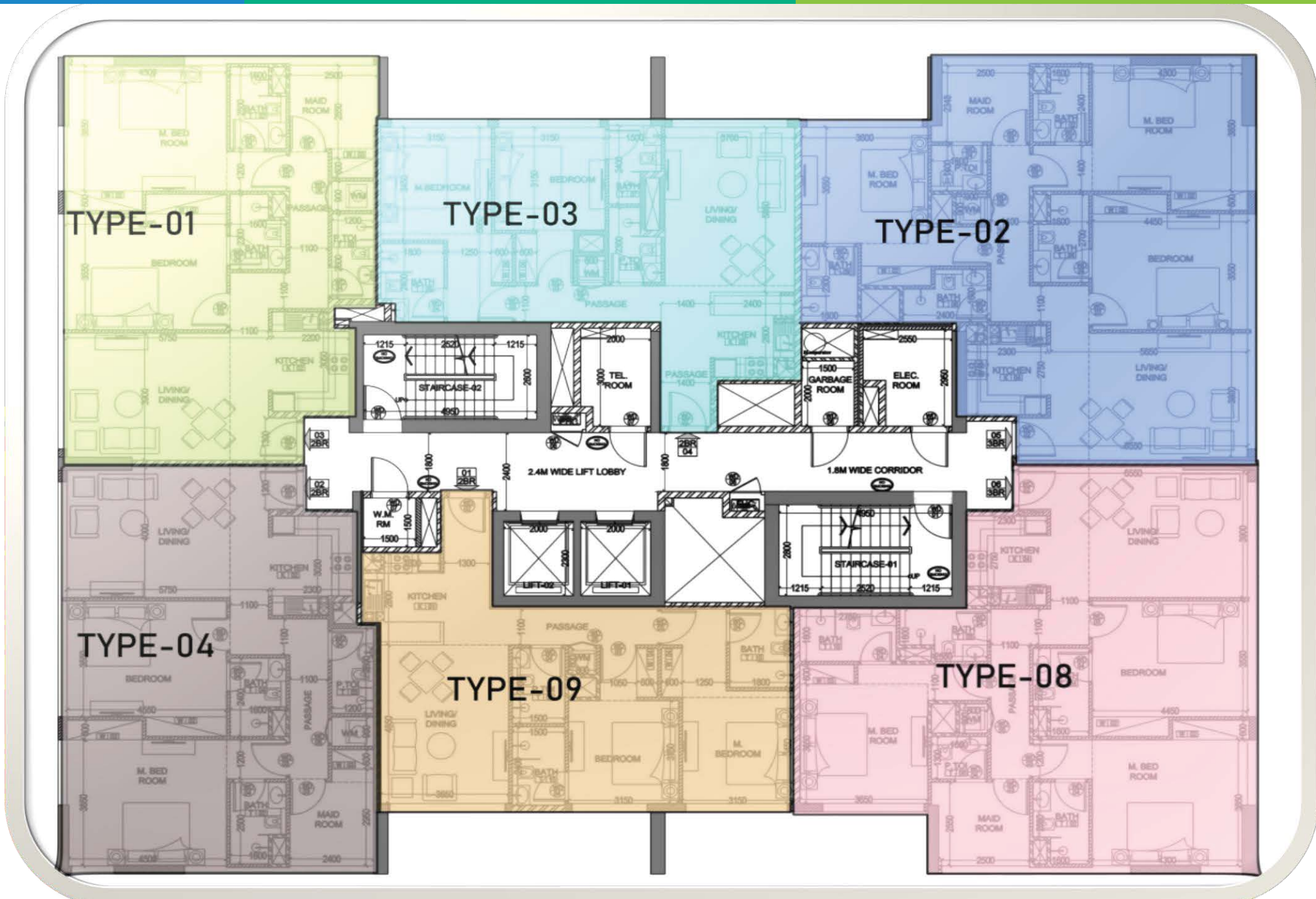
1ST FLOOR LAYOUT



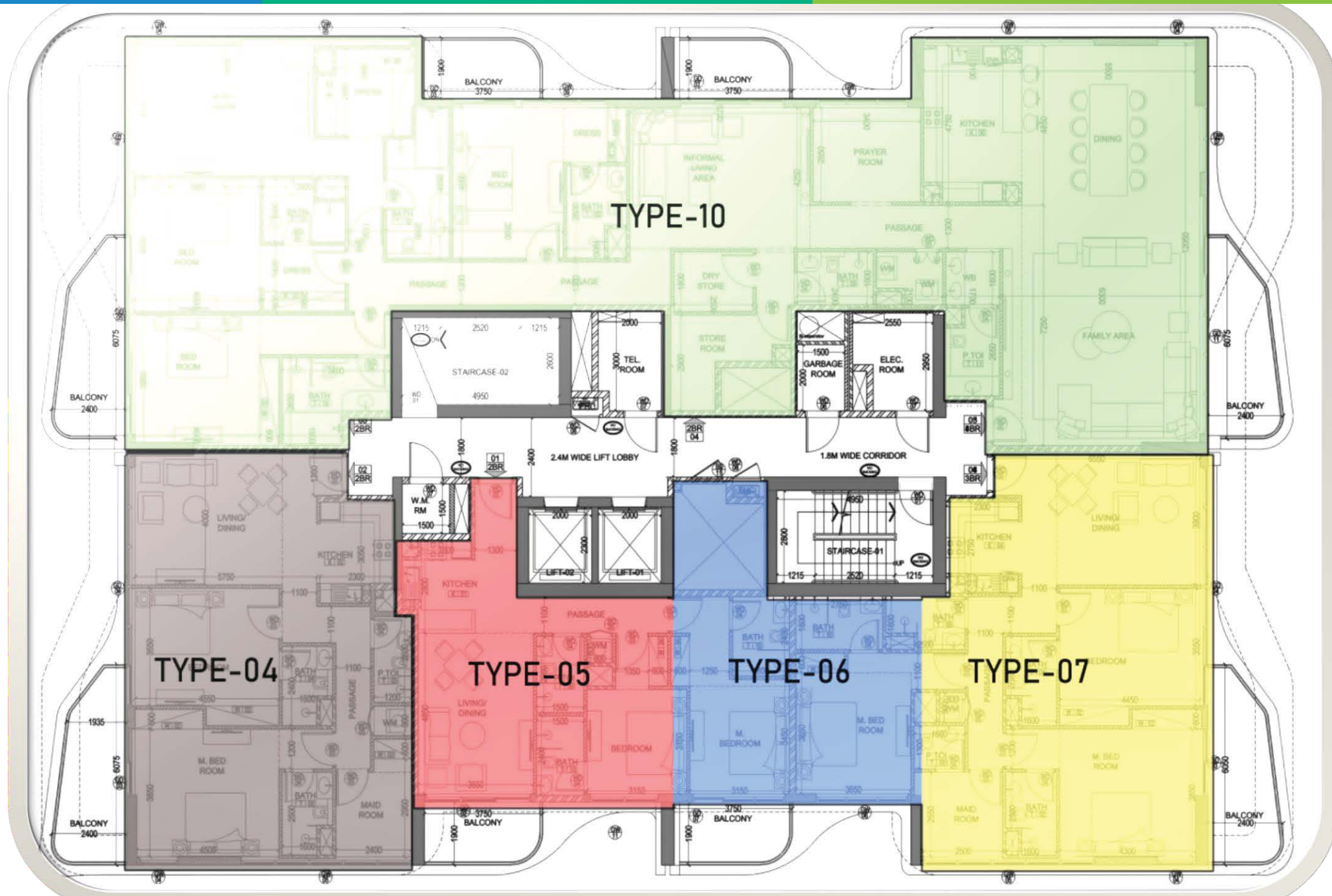
2ND – 5TH FLOORS LAYOUT



6TH – 11TH
FLOORS
LAYOUT



12TH FLOOR LAYOUT



1 BHK LAYOUT



2 BHK LAYOUT



3 BHK LAYOUT





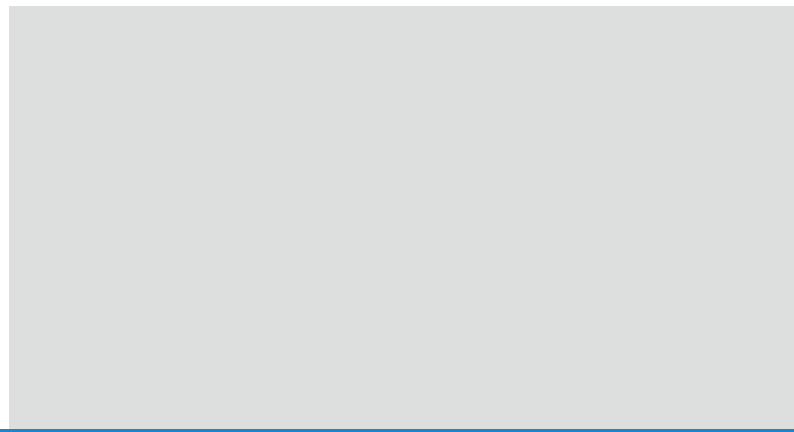
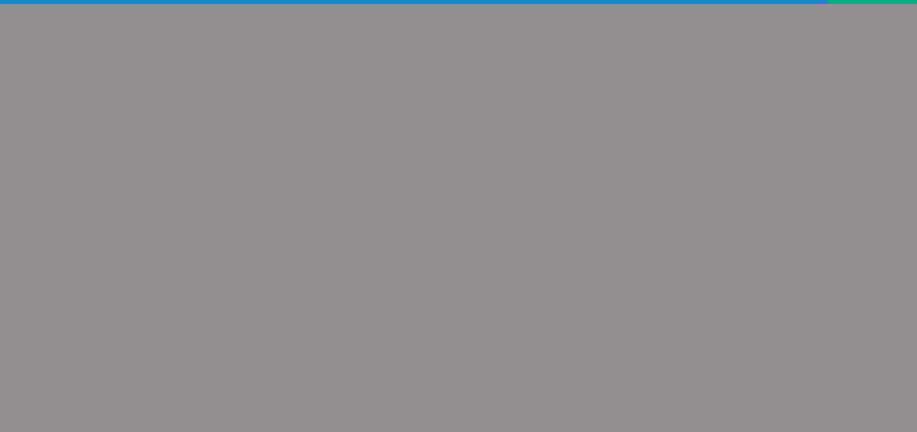
OUR PROJECTS

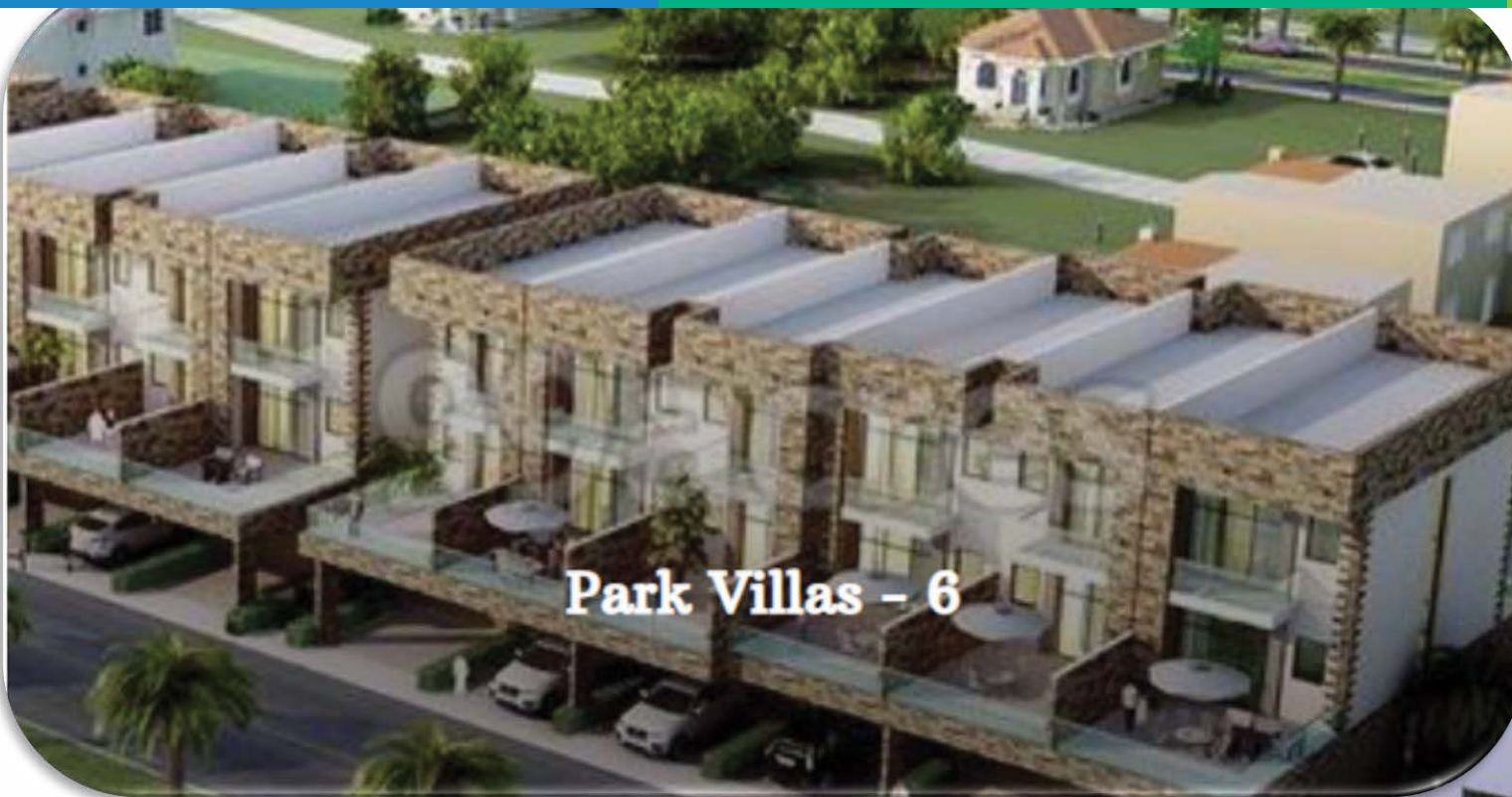
AG TOWER



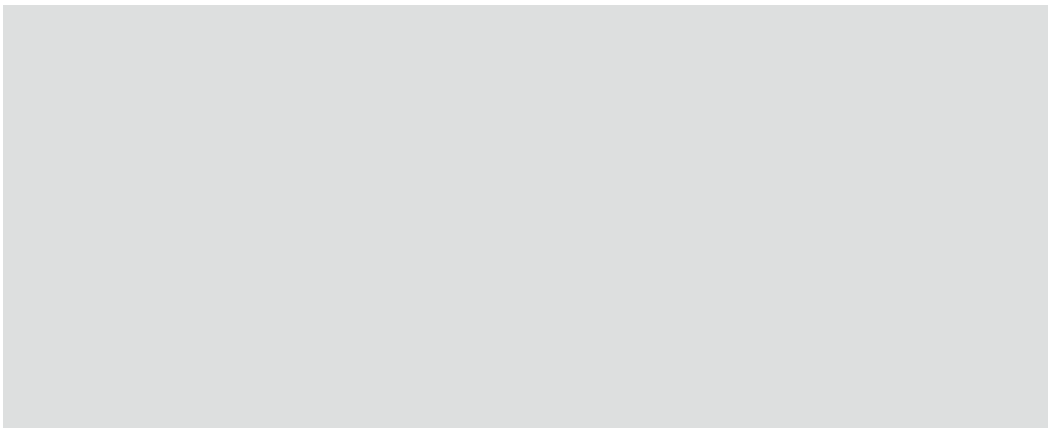
KI Building







Park Villas - 6

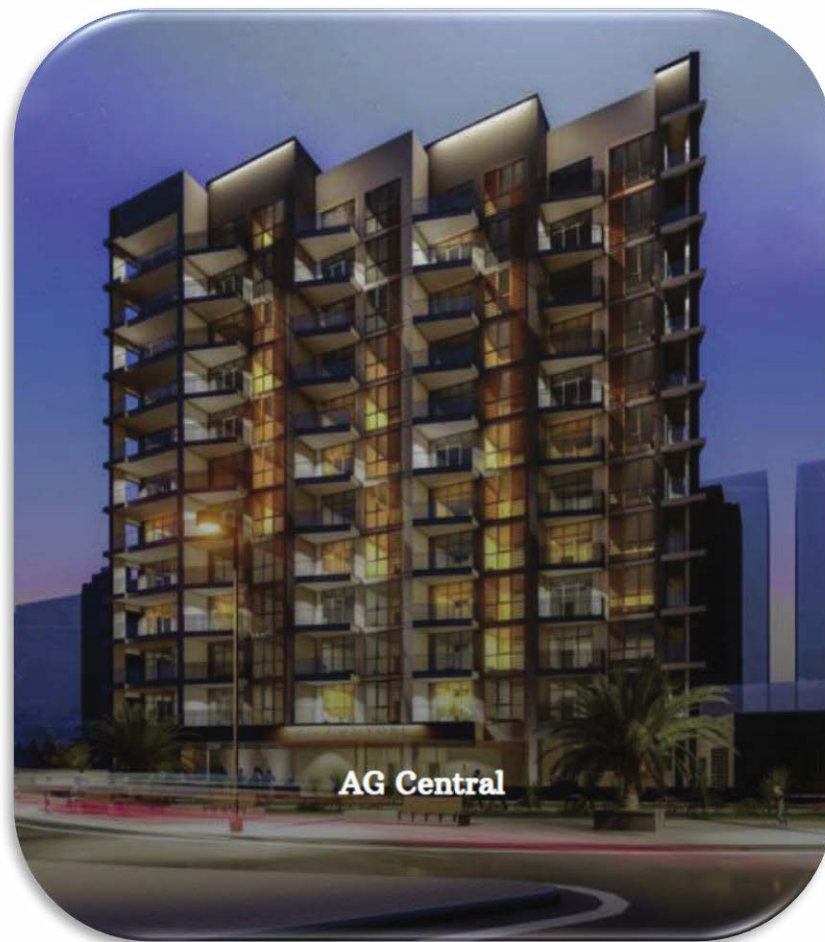


Bosnia Monti











WHITECLIFFS

RESIDENCES

FOR MORE INFORMATION PLEASE CONTACT



REAL ESTATE

STAY AHEAD, INVEST SMART

☎ +971 55 476 7630
☎ +971 4 368 7878
✉ info@afsrealestate.com
🌐 www.afsrealestate.com



DUBRICKS

POSSIBILITIES ARE LIMITLESS

☎ +971 50 674 2020
☎ +971 4 397 7731
✉ info@dubricks.com
🌐 www.dubricks.com

A PROJECT IN DUBAI ISLANDS